



**RETINA**

## **Real Time Navigation**

Navigating the Way to Trustworthy Healthcare





### More adaptability

**+** The RETINA is equipped with a universal adapter which connects with numerous surgical instruments.

### Less invasive procedures

**—** The RETINA can assist surgeons to achieve minimally invasive surgical practices. Faster recovery and less trauma.

- 1 Arm to Camera
- 2 Tracking Unit
- 3 Touch Screen
- 4 Unit Body
- 5 Power Button
- 6 LED Switch Indicator
- 7 USB Ports
- 8 Unit Base
- 9 Unit Base Wheels



ISO  
13485

GMP

CE  
2460

# RETINA Stereotactic Surgery Navigation System

The RETINA gathers the state of the art of navigation combing it with perfect accuracy during diverse surgical procedures including Neurosurgery, E.N.T., Craniofacial, Plastic Surgery, Oral and Maxillofacial Surgery.

The RETINA offers intelligent medical technologies and services which can integrate digital medical imaging for better surgical accuracy. The RETINA also reduces unnecessary tissue injuries, by assisting surgeons while performing minimally invasive surgeries, improving surgical quality results and reducing the risk of post-operative complications, which provide better medical service for patients altogether.

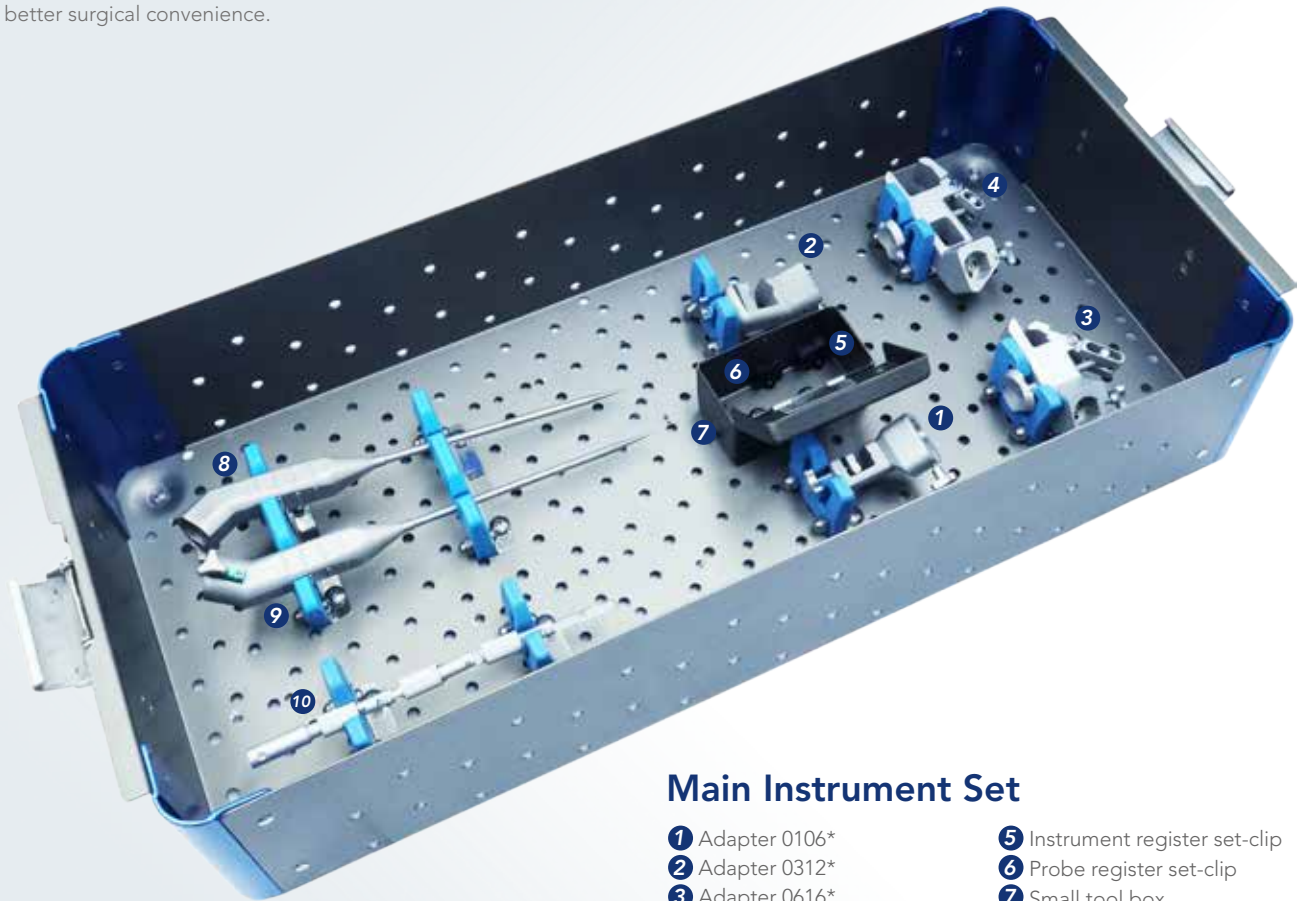
# Instruments & Consumables

With the key optical space location technology, doctors can monitor the position of the instrument tip as well as the direction and distance of target area in real time during surgery in order to increase the accuracy of surgery.

The RETINA is equipped with a beacon of instruments to aid doctors during different procedures. Moreover, a universal adapter that works with a variety of surgical instruments is included for better surgical convenience.

## High Price-Performance Value

Along with a high price-performance value, the improved surgical outcomes provide better medical services for patients. The RETINA is also compatible with other surgical instruments and is rated with higher accuracy among its competitors.



### Main Instrument Set

- ① Adapter 0106\*
- ② Adapter 0312\*
- ③ Adapter 0616\*
- ④ Adapter 1625\*
- ⑤ Instrument register set-clip
- ⑥ Probe register set-clip
- ⑦ Small tool box
- ⑧ Preoperative probe
- ⑨ Intraoperative probe
- ⑩ Adjustable guide holder

\*Sold Separately

### Contents



Ligister

### Disposable Consumables



① Instrument Register Set



② Positioner arm set



③ Reflective Attachment



④ Headband fixing pads



## ENT Instrument Set

- ① Headband Set
- ①-A Marker Holder
- ①-B Elastic Belt
- ①-C Screw
- ①-D Soft Pad
- ② Maxillar Ostium Seeker
- ③ Frontal Ostium Seeker

## Biopsy Needle Holder and Arm Set

- ① Arm Holder
- ② Biopsy Needle Holder
- ③ Biopsy Guiding Waser

Biopsy Guiding Waser Size Chart

Ø 2.5mm	Ø 4.5mm
Ø 3.0mm	Ø 5.0mm
Ø 3.5mm	Ø 5.5mm
Ø 4.0mm	Ø 6.0mm

## Optional Components



① Skull Clamp

② AR Glasses

③ Instrument Holder Adapter

# All Your Needs Are Covered



## Application

### Neurosurgery

Fusion CT and MRI files to appreciate on screen soft and hard tissue intertwined for better reference. Color-mark abnormalities with the Segmentation Function, and create surgery paths and object-targeting procedures.

### E.N.T.

Guide surgeries on screen with the aid of an endoscope. Add distance extensions to the tip of your instruments for better distance calculation during surgery.

### Plastic Surgery

Mirror healthy samples of bone into damaged areas to repair bone fracture and similar complications.

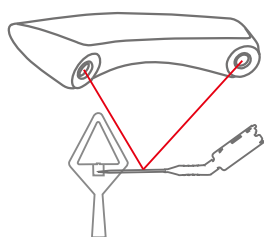
### Maxillofacial

Attach the patient marker directly into the patient's tooth and use the Feature Point Registration to quickly register the patient's surgical area.

### Oral Surgery

Draw and trace nerves to avoid them during surgery. Visualize in real time the distance between instrument and nerve at all times .

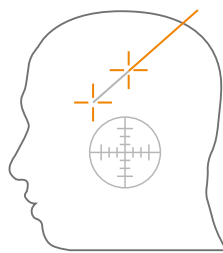
## User-Friendly Platform



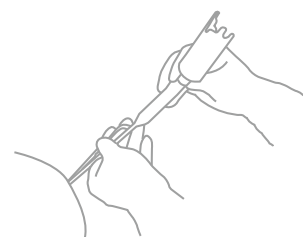
**1** Easy Instrument Calibration



**2** Fast Patient Registration

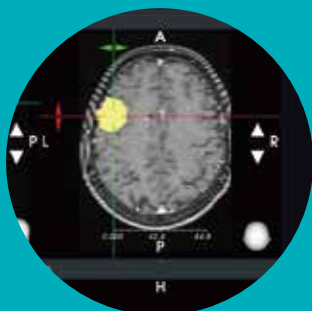


**3** Surgical Path Creation

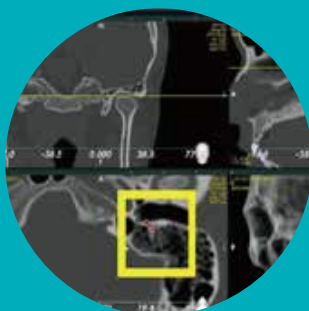


**4** Accurate Surgery Execution

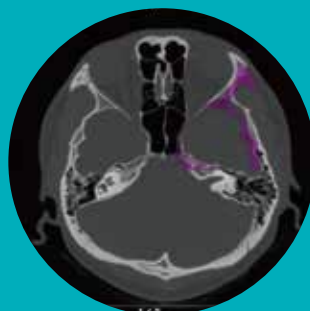
# Safe Planning And Execution



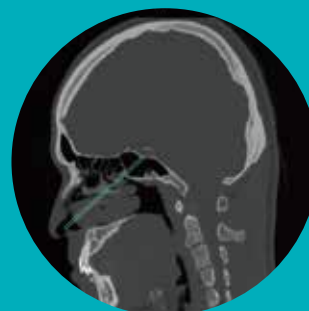
Tumor targeting



Nerve drawing



Mirroring



Pre-surgical planning



## System Specifications

System Accuracy	> 2mm
Tracking Unit Size	520mm (L) x 155mm (W) x 90mm (H)
Cart Size	60mm (L) x 170cm (W) x 180cm (H)
CPU	Intel Core i7 series or higher
Monitor	Display Resolution: 2K , 2 input ports (DP & HDMI)
Power supply	110~230 VAC, 50/60HZ
Operating temperature	5°C~40°C
Transport and environmental storage	-10°C~50°C

Specifications are subject to change without notice.



EPED Inc.

Kaohsiung Head Office  
2F., No.90, Luke 5th Rd., Luzhu Dist.,  
Kaohsiung City 821, Taiwan  
T. +886-7-6955596  
F. +886-7-6955579  
www.epedmed.com

Taipei Office  
7F.-2, No.128, Sec. 2, Dunhua S. Rd.,  
Da'an Dist., Taipei City 106, Taiwan  
T.+886-2-27067018  
F.+886-2-27554919



www.epedmed.com/retina

Ver.A 2020.11